

Precision-Engineered
Flooring & Ceiling Systems for
**Mission-Critical
Environments**

MANUFACTURED FOR &
EXCLUSIVELY DISTRIBUTED BY:



SELECTPREFAB
SOLUTIONS
a DIVERZIFY company

MANUFACTURED
IN INDIA BY:



UNITILE
RAISED ACCESS FLOOR SYSTEMS



At the intersection of innovation and infrastructure, **Unitile and Select Prefab Solutions** are redefining the foundation of mission-critical design.

Our advanced flooring and ceiling systems combine strength, intelligence, and scalability, empowering global data center developers and architects to create environments engineered for the future.

Complete Structural Ecosystem

Raised Access Floor Panels

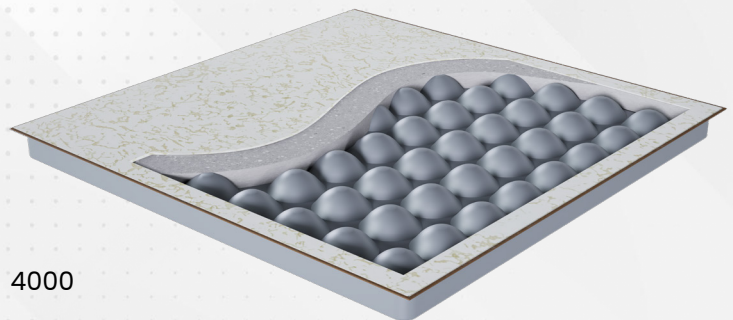
STEEL CEMENTITIOUS PANEL

Dimensions: 2 ft x 2 ft (24" x 24")

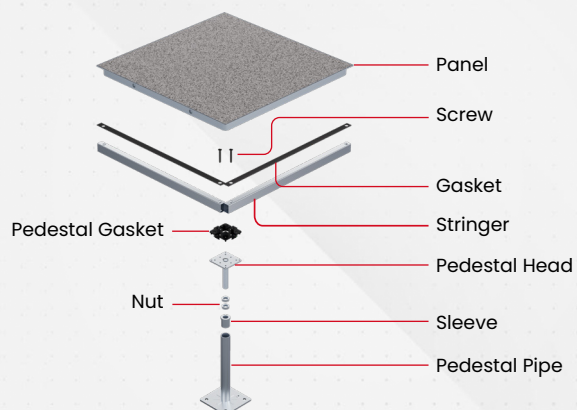
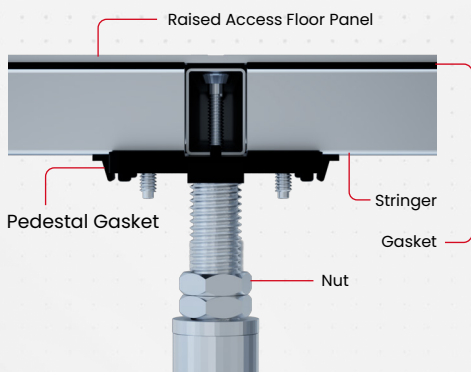
Beam Height: 1.26"

Top Finish: High Pressure Laminate and PVC

Grades: 1000 | 1250 | 1500 | 2000 | 2500 | 3000 | 4000



Understructure System:



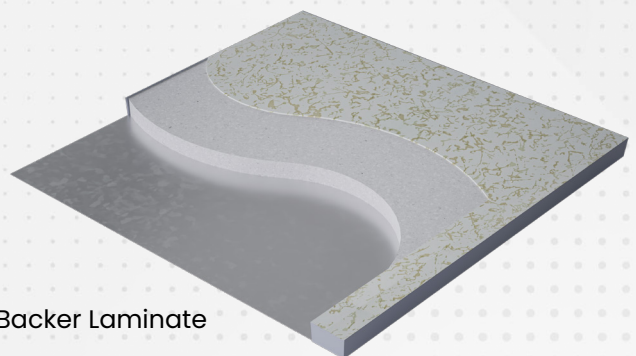
CALCIUM SULPHATE (UCS) PANEL

Dimensions: 1.96 ft x 1.96 ft (23.62" x 23.62")

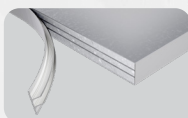
Core Thickness: 1.34" + Top Finish Thickness

Top Finish: Galvanized Iron Sheet, High Pressure Laminate and PVC

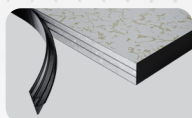
Bottom Finish: Galvanized Iron Sheet, Aluminium Foil and Backer Laminate



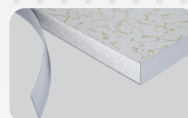
Available Edge Band Options:



Aluminium Edge Band



Profile PVC Edge Band

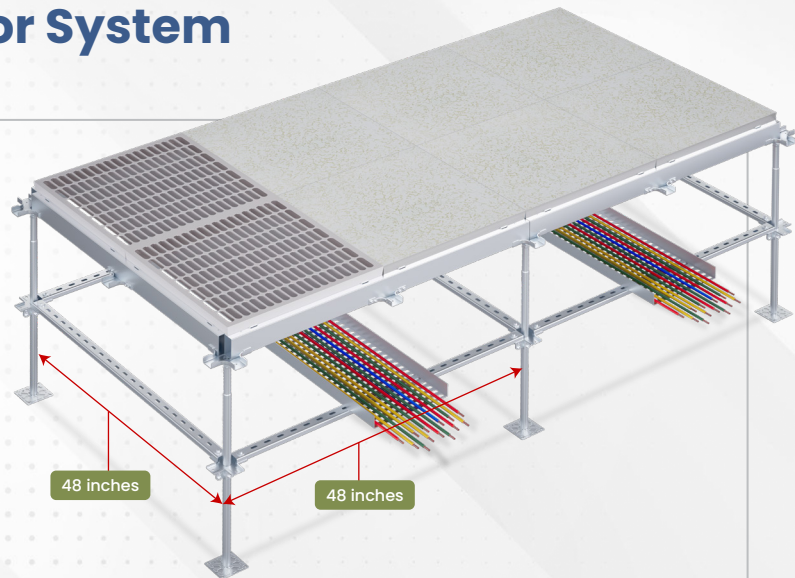


Regular PVC Edge Band

Nex-Gen Raised Access Floor System

4 ft x 4 ft (48" x 48")

The Nex-Gen Raised Access Floor System embodies the next evolution in data center infrastructure design. Engineered with a wider modular span, it ensures uninterrupted cable management and optimized airflow pathways. Reimagined for enhanced strength, flexibility, and installation efficiency, the Nex-Gen System delivers a robust foundation for high-performance, mission-critical environments.



System Compatible with both Steel Cementitious and Calcium Sulphate Panel.

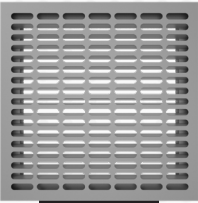
SYSTEM FEATURES AND ADVANTAGES

- 01.** The high-grade steel under structure offers superior strength and expanded bridging capability, with standard finished floor heights ranging from 450 - 2000 mm (17.71" - 78.74").
- 02.** All floor components are factory pre galvanized, and the entire system is fully earth connected.
- 03.** No expensive bridging required due to flexible pedestal placement, this ensures the lead times and unnecessary expenses are reduced.
- 04.** Pedestal layouts with as much as 1200 mm (47.24") on center offer greater utility aisles and cableways in the plenum.
- 05.** Uniform load ratings of the Nex-Gen system sub-structure of up to 2000 kgs/m² (4409 lbf).
- 06.** Unique system flexibility offers future equipment expansion within the existing the floor design.
- 07.** Tested and approved in accordance with, CISCA (USA) and EN-12825 (EU) & MOB-PF2 (UK).

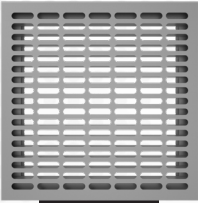


U-Flex Data Center Accessories

AIRFLOW GRILLS



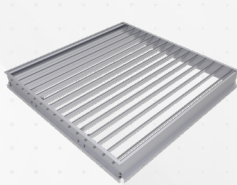
55% OPENING



65% OPENING



80% OPENING



VOLUME CONTROL DAMPER



MULTIPLYAIR

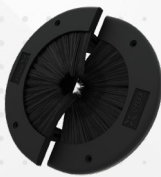
BRUSH GROMMETS | VISION PANEL | PANEL LIFTER



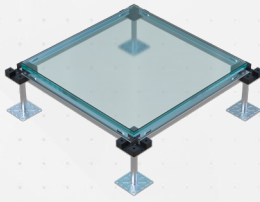
SPLIT INTEGRATED GROMMET



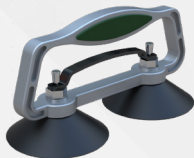
INTEGRATED GROMMET



SPLIT CIRCULAR BRUSH GROMMET



VISION PANEL



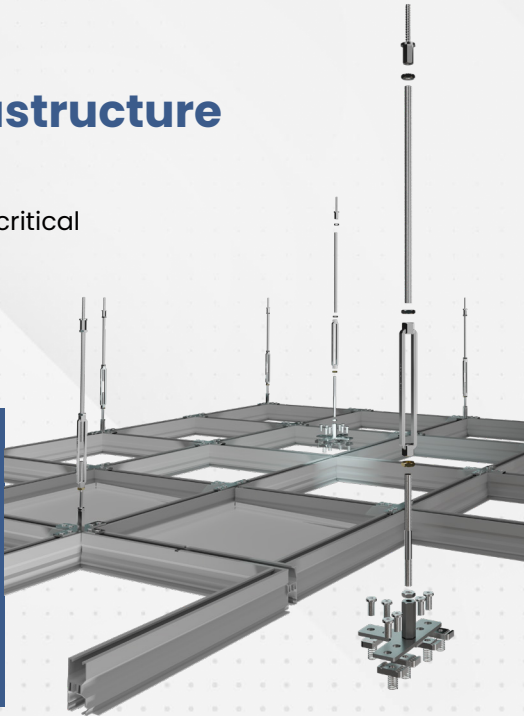
PANEL LIFTER

U-Flex Structural Ceiling Solutions: Engineering the Future of Data Center Infrastructure

Engineered for precision, the U-Flex Structural Ceiling Grid Solution delivers exceptional reliability and flexibility across modern data centers and mission-critical spaces. Recognizing that every data center varies in density and application, U-Flex offers two distinct solutions — Prime and Extreme — each designed to deliver a specific tier of structural capacity and connectivity.

U-Flex Prime & Extreme

U-Flex Prime offers a versatile mid-range capacity, providing a strong foundation for containment barriers and suspended equipment. U-Flex Extreme, built for heavy-duty applications, delivers maximum strength and stability to support dense arrays of overhead services and equipment.



U-Flex Ceiling Solution	Maximum Safe Working Point Load (Mid Span) *	Maximum Safe Uniform Load*	Key Difference & Feature
Prime	2.94kN / 300kg (661.38 lb)	4.90kN/m2 / 499 kg/m2 (0.709 lb/in^2)	A versatile, balanced solution, utilizing standardized strut channel nut connectors.
Extreme	4.90kN / 500kg (1102 lb)	6.81kN/m2 / 695 kg/m2 (0.988 lb/in^2)	Highest load capacity, utilizing standardized strut channel nut connectors for all slots.

Published
worldwide at



Scan to access



EPD 15660
Steel Cementitious Panel

Scan to access



EPD 15661
U-Flex Structural Ceiling

Scan to access



EPD 15662
Calcium Sulphate Panel

International EPD System (IES) – a globally recognized programme for Type III Environmental Declarations, based on ISO 14025 and operated by IVL Swedish Environmental Research Institute.

Technical Certifications and compliances



PSB Singapore



BUREAU
VERITAS

Empowering the infrastructure
that drives tomorrow's digital world.

Connect with us for partnership or technical discussions.



Precision-Engineered Flooring & Ceiling Systems for **Mission-Critical Environments**

MANUFACTURED FOR &
EXCLUSIVELY DISTRIBUTED BY:



SELECTPREFAB
SOLUTIONS
a DIVERZIFY company

MANUFACTURED
IN INDIA BY:



UNITILE
RAISED ACCESS FLOOR SYSTEMS

